



pearson
ferrier®



115 WALMERSLEY ROAD
Bury, BL9 5AY
£1,000 Per Calendar Month

115 WALMERSLEY ROAD

Property at a glance

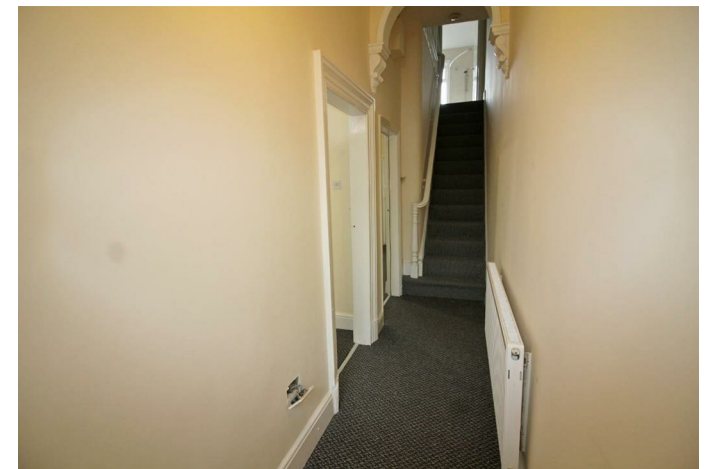
- AVAILABLE NOW
- VICTORIAN TERRACE PROPERTY
- TWO RECEPTION ROOMS
- THREE BEDROOMS
- ELECTRIC GARAGE DOOR
- CELLAR
- COUNCIL TAX BAND B
- EPC RATING E

AVAILABLE NOW A substantial Victorian end terraced villa with accommodation over four floors, occupying a convenient position less than half a mile to Bury town centre and yet across the road from Chesham Precinct and a short walk to Clarence Park. With combination gas central heating and with upvc double glazing throughout, the current accommodation comprises: entrance vestibule, inner hall, lounge, dining room, rear porch, basement. First landing, three double bedrooms and four piece family bathroom. To the outside there is a garden forecourt to the front and to the rear is a yard with private parking operated by an electric garage roller shutter.

ADDITIONAL INFORMATION:

The EPC rating is band E. Council tax band B.

Please note that you will be required to pay a Holding Deposit (equivalent to one weeks rent) to secure the property.





Bury Office
435/7 Walmersley Road, Bury, Lancashire, BL9 5EU
Telephone: 0161 764 4440
Fax: #
Email: bury@pearsonferrier.co.uk

www.pearsonferrier.co.uk

All statements contained in these particulars are for indicative purposes only and are made without responsibility on the part of Pearson Ferrier and the vendors of this property and are not to be relied on as statements or representations of fact. Potential purchasers should satisfy themselves by inspection or otherwise as to the accuracy of such details contained in these particulars.

